

Heroes for Life



Heroes for Life

Campaign for
Ann & Robert H. Lurie
Children's Hospital of ChicagoSM

*An Overview Prepared for
Cal's All Star Angel Foundation*

July 2010

Contents

- 1** At Children's Memorial heroes are...
- 2** Children's Memorial Hospital today
- 5** A new legacy
- 6** Innovations and highlights
- 8** Family-centered amenities
- 9** Building from the ground up
- 13** Architectural renderings
- 21** Join us on our journey

At Children's Memorial, heroes are...

- Children and families facing illness and injury;
- Doctors and nurses helping patients live life to the fullest;
- Scientists seeking to discover new treatments and cures;
- Volunteers giving their time and talents to the hospital;
- Donors investing in the hospital's mission; and
- All hospital employees whose work supports children and their caregivers.

Heroes for Life: Campaign for Ann & Robert H. Lurie Children's Hospital of Chicago unites these many everyday heroes with a common cause – securing a brighter future for children. Those participating in the *Heroes for Life* campaign will forever be viewed as heroes in the eyes of the community.

We invite Cal's All Star Angel Foundation to join us and become a hero to the children and families of Chicago and everywhere.

Children's Memorial Hospital today

Largest pediatric provider in the region*

- Annual patient visits: 504,993
- Inpatient admissions: 12,210
- Ambulatory and ER visits: 498,771
- Surgical procedures: 20,049

Ranked #1 in nearly every pediatric specialty

- Asthma
- Cardiology
- Cardiovascular-thoracic surgery
- ENT (otolaryngology)
- Gastroenterology
- General medicine
- General surgery
- Genetics
- Heart transplantation
- Hematology/oncology
- Immunology/rheumatology
- Infectious diseases
- Kidney diseases (nephrology)
- Kidney transplantation
- Liver transplantation
- Neonatology tertiary care (0-60 days)
- Neurosurgery
- Plastic and reconstructive surgery
- Pulmonary medicine
- Urology

**Internal numbers from fiscal year 2009: includes volumes from Central DuPage Hospital pediatric program and Northwest Community Hospital pediatric emergency department*

Children's Memorial Hospital today

A Dynamic Institution

- Children's Memorial Hospital is consistently cited as one of the nation's top-ranking children's hospitals by *U.S. News & World Report*, *Parents*, *Modern Healthcare*, *Working Mother* and *ADVANCE for Nurses* magazines.
- We are the region's top provider in 20 pediatric specialties. In fiscal year 2009, we served children from every state and 36 countries.
- Our nurses have earned the most prestigious national honor, the Magnet Award for Nursing Excellence. We were the first children's hospital in the nation to achieve such recognition, currently held by only 6 percent of the nation's hospitals.

Cutting-edge Research

- Children's Memorial Research Center is the research and scientific enterprise of Children's Memorial Hospital. We are also one of 29 interdisciplinary research centers and institutes of the hospital's academic partner, Northwestern University's Feinberg School of Medicine, where our principal investigators are full-time faculty members.
- In fiscal year 2009, our research investigators were awarded \$34.8 million in extramural funding. Also in 2009, the research center had 212 physician-scientists, 295 papers published in peer-reviewed journals and 581 proposals submitted.
- In 2008, we were the nation's first pediatric hospital to acquire XenoBase, a unique bioinformatics system with a powerful capacity to integrate clinical and research data.

Advancing Education

- We are the pediatric training center for Northwestern University's Feinberg School of Medicine, providing residencies in both pediatrics and pediatric surgery.
- Each year, the Department of Pediatrics trains about 200 physicians. Almost half are pediatric residents, and the remainder are fellows in various pediatric subspecialties including cardiology, hematology/oncology and neonatology. The department ranked 17th nationally in the 2009 *U.S. News & World Report's* "Best Medical Schools Specialty Rankings for Pediatrics."

Ann & Robert H. Lurie Children's Hospital of Chicago



View from Chicago Avenue

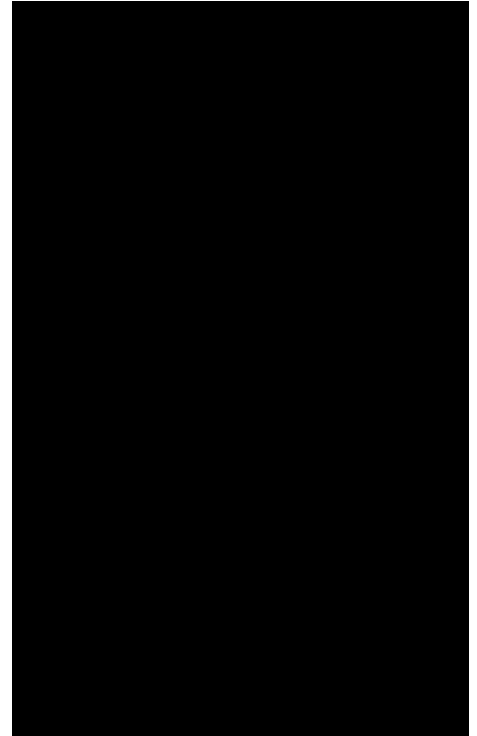
A new legacy

A state-of-the-art facility is about much more than space and technology. Its importance lies in what it will make possible – a platform for the convergence of progressive ideas, talented people and innovative programs that will stimulate momentous breakthroughs in treatment and care.

Our capacity to achieve this vision can be realized only through an unprecedented new level of private philanthropic investment.

When it opens in 2012, Lurie Children's will be an ultra- modern and adaptable facility that will:

- Be comprised of 288 beds, with the capacity to ultimately expand to 313. All patient rooms will be private.
- Increase patient capacity by 25-30%, accommodating up to 3,000 additional inpatient admissions annually.
- Offer greater opportunities for clinical, academic and research collaborations with colleagues at adjacent medical and academic institutions.
- Contribute to care and healing through patient-centered design and the optimal organization of services.
- Attract more top tier physicians and scientists by adding space, configuration and capacity to increase faculty by as much as 25%.
- Expand functional space for staff and family educational activities, including, training facilities, conference areas and a family resource center.
- Stimulate a convergence of world class clinical care, research, education and advocacy to transform pediatric health care for the region and beyond.



Innovations and highlights



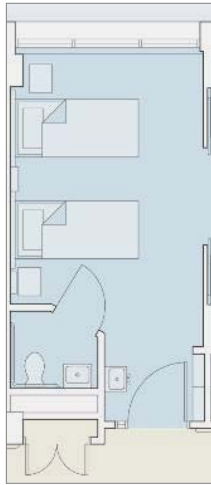
FACTS AT A GLANCE

	Current	Future
Private patient room size	250 sq. ft.	290 sq. ft.
Licensed inpatient beds	270	288*
Pediatric ICU beds	48	60
Neonatal ICU beds	53	60
Surgical & procedural rooms	20	26
Imaging rooms	7	9
Emergency Department beds	25	45
Clinical research beds	2	12

**Capacity to increase to 313*

View from Chicago Avenue

- Critical care capacity:** At 60 beds, Lurie Children’s will offer one of the largest pediatric critical care units in the nation, dramatically increasing the hospital’s ability to care for the most seriously ill children.
- More space for clinical research:** A larger outpatient clinical research center with a pharmacy, specialized staff and data analysis systems will be located next to a 12-room inpatient unit for children participating in clinical trials who need to be monitored overnight.
- World-class:** Lurie Children’s will offer an expanded Center for Autonomic Medicine in Pediatrics, the only one in the world that treats and studies abnormalities in systems that regulate breathing, heart rate, temperature and other related processes.
- Sustainable facility:** The new facility will qualify for LEED (Leadership in Energy and Environmental Design) certification. In order to reduce water and energy usage, highlights include a green roof, a storm water management system and the use of low-emission indoor products, such as paints and carpets.



Current semi-private patient room



Future private patient room

- **Private Rooms:** All private rooms, including the neonatal intensive care unit, help control infection and reduce noise—both proven to speed healing.
- **Smoother transition to adult care:** Proximity to Northwestern Memorial Hospital and the Rehabilitation Institute of Chicago will ease transition into adult care for patients with spina bifida, congenital heart disease and other conditions that children now survive.
- **Speedy transport:** The adjacency to Prentice Women’s Hospital will allow faster and safer transport for newborns who require surgery or specialized care.
- **First in the nation:** The 36-room acuity-adaptable Regenstein Comprehensive Cardiac Unit will provide expertise and technology for intensive care.
- **At the forefront:** The neurocritical care program will offer comprehensive interdisciplinary treatment for neurological problems in intensive care.

Family-centered amenities



Children’s Memorial has actively engaged the creative and artistic talents of many of Chicago’s most esteemed cultural and civic institutions to assist in the design of the public spaces in the new hospital through the unique Community Partnerships Program. The **Pritzker Foundation Lobby**, pictured at left, will feature whales donated by the Shedd Aquarium.

- Inpatients and families will enjoy a variety of new amenities, including a larger Family Life Center, dedicated space for art and recreational activities, a classroom, a salon, a laundry and ample respite areas.
- Private patient rooms will offer internet access, on-demand dining options, and rest space for parents. A 9-room in-house family sleep suite will be available for parents on the 12th floor who do not want to leave their critically ill children. Families can also stay at the world’s largest Ronald McDonald House, which will be located a short distance away from the hospital.
- Family support space on inpatient units will provide central playrooms and dining areas outside the patient room setting.
- The Crown Sky Garden will be a spacious multi-functional gathering place unlike any other in the hospital. It will be a place of respite, healing and wonder for patients, families, staff and visitors alike.

Building from the ground up

Ground was broken for Ann & Robert H. Lurie Children's Hospital of Chicago in April 2008 and construction continues to move forward on schedule:

- The design process for the new hospital is complete and incorporates input from our employees, physicians, patients, families and architects.
- An official “topping off” ceremony was held in early December, 2009 to mark the installation of the final piece of structural steel. A tradition in the construction industry, “topping off” marks the time when the highest beam is installed at the top of the building. An evergreen tree—to symbolize growth and bring good luck—and a U.S. flag was placed atop the structure.
- Steel for the mechanical penthouse that sits on top of the roof was installed in January. The pre-cast concrete (which will make up the “skin” of the building) is installed up to the 21st floor and windows are installed up to the 15th floor.
- With the lower half of the building enclosed, workers can continue with interior construction during the winter months. Drywall installation is well underway on floors 1 through 11. Currently, our cranes are being used for lifting air handlers and other mechanical equipment to the 10th floor and boilers and chillers to the 23rd floor.
- The transition planning process for Lurie Children’s began in May 2009 with the appointment of a dedicated transition team. Transition team members will continue to meet with hospital leaders from across the organization who will work with their teams to develop an integrated, detailed operational plan.



Construction Progress as of April 2008



Construction Progress as of July 2010

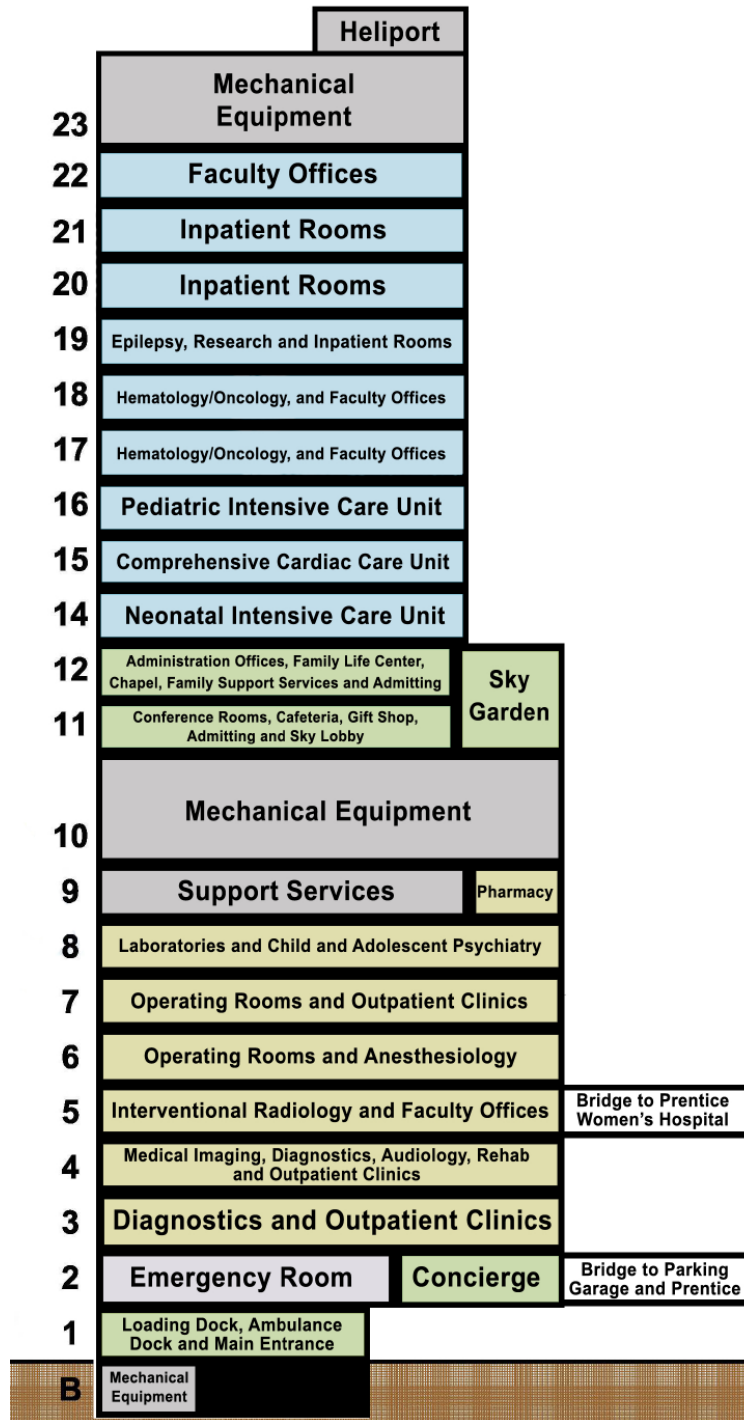
Site plan

Prentice Women's Hospital



 Ann & Robert H. Lurie
Children's Hospital of Chicago™

Floor layout



Nursing care station



Details subject to change

Acute inpatient room

Details subject to change

NICU patient care room



Details subject to change

Procedural room



Details subject to change

Kenneth and Anne Griffin Emergency Care Center



Details subject to change

Hematology/Oncology Day Hospital infusion room



Details subject to change

Family Life Center



Details subject to change

Family Learning and Resource Center



Details subject to change

Join us on our journey

As we anticipate the future, your support will strengthen our ability to offer outstanding and accessible care to children and families in their greatest time of need. Nothing we can do could be more important than securing the health and future of children, giving them every opportunity to achieve their full potential.

A world-class hospital will enhance the quality of life in our community and raise the bar for medical care and treatment of our children, transforming pediatric healthcare in the city of Chicago, the region and beyond.

We look forward to working with Cal's All Star Angel Foundation to create a partnership that will impact children and families in a positive and significant way by providing access to the best pediatric medical care.



Imagine a brighter, healthier future for our community's children because of Ann & Robert H. Lurie Children's Hospital of Chicago. Our gift to Chicago...our gift to children everywhere.